

# Blackhawk 4G Low Band Yagi Antenna, 698 to 890 MHz, N Female

SKU: ANT-BH-YG-100

MPN: VYG-6989-14.N2

Barcode: 9337692002403

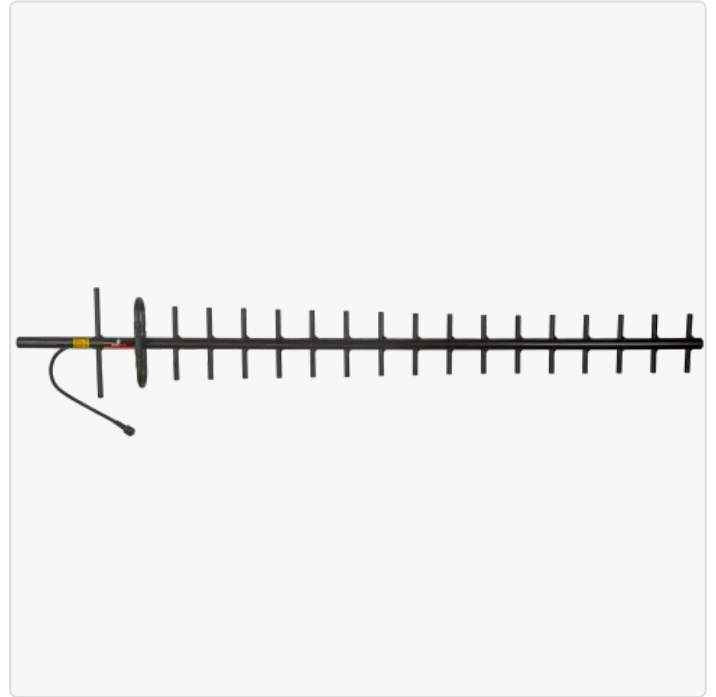
## Description

Blackhawk's 14 dBi Yagi antenna has been one of the most popular installed 4G house antennas in Australia. This antenna is an ideal antenna for CEL-FI GO repeaters that need to connect to a cell tower over a long distance.

The antenna provides good all-round performance on the rural 4G 700 MHz band used as the main frequency band for both Telstra and Optus networks, and Vodafone's rural 4G 850 MHz band. It can operate on 5G NR850 which is being rolled out in replacement of older 3G networks. Likewise, it operates at full strength on Vodafone's 5G 700 MHz band.

The Yagi antenna is tuned to a 200 MHz bandwidth @ VSWR ~1.8:1 from 690 to 890 MHz. This allows the one high gain antenna to operate on both 700 MHz 4G and 850 MHz Rural 5G without any major compromise in performance.

With a 13 to 14 dBi gain, the antenna is designed to operate in rural and regional areas, out to about 40 kilometres from the nearest base station. This gain provides a good compromise between high gain and narrow beamwidth. Antennas need to maintain a reasonably wide beam (around 25 degrees in this case) to capture reflected and delayed radio paths that your device can digitally reconstruct.



### Powertec

Powertec is a wireless technology manufacturer and systems integrator based in Australia. Operating since 1995, Powertec has grown to become the leading wireless technology distributor in its region, and a leading Infratech systems developer. Supporting over 1500 partners the company provides procurement, design, project management, and support services across Australia, New Zealand, Pacific ...

# RF Specification

Start Frequency:	698 MHz	Polarisation:	Vertical (V)
Stop Frequency:	890 MHz	Input Impedance:	50
Max. Input Power:	50 W		

## RF Connectors

Ports	RF Interface	Body Shape	Cable Series	Length
1	N Female	Straight	L-240	300 mm

## Frequency Test Data

Start Freq.	Stop Freq.	Peak Gain	VSWR	Azimuth	Elevation	F/B Ratio
698 MHz	890 MHz	14 dBi	< 2:1	27°	26°	> 25 dB

# Physical Specification

Subtype:	Yagi	Dimensions:	1330 x 75 x 220
Input Ports:	1	Materials:	Aluminium
MIMO:	1x1 SISO	Mounting:	Pole Clamp 30 to 52 mm
Min. Operating Temperature:	-40 °C	Weight:	1.5 kg
Max. Operating Temperature:	70 °C	Compliance/Certifications:	ISO 9001 Quality Management

Disclaimer: Although care has been taken to ensure the accuracy, completeness and reliability of the information provided, Powertec assumes no responsibility therefore. The user of the information agrees that the information is subject to change without notice. Powertec assumes no responsibility for the consequences of use of such information, nor for any infringement of third party intellectual property rights which may result from its use. IN NO EVENT SHALL POWERTEC BE LIABLE FOR ANY DIRECT, INDIRECT, SPECIAL, OR INCIDENTAL DAMAGE RESULTING FROM, ARISING OUT OF OR IN CONNECTION WITH THE USE OF THE INFORMATION.

