

Cambium Dual Polarised 5 GHz HP Parabolic Antenna, 1.2 metre

MPN: RDH4510B

Description

Cambium's RDH4510B is a dual-polarised High Performance (HP) parabolic dish antenna manufactured by RadioWaves. The 1.2 metre (4 ft) diameter antenna provides a nominal peak gain of 34.7 dBi from 5250 to 5850 MHz, and capable of operation across the full 5 GHz band from 4900 to 6000 MHz with only a minor degradation in performance.

With its integrated radome, the 1.2 metre diameter RDH4510B is used in long distance point to point, providing connectivity beyond 50 kilometres, and considerably further in many regulatory environments.

The HP High Performance Series by RadioWaves offers a full line of high performance parabolic antennas engineered to provide ETSI class 2/3 radiation pattern conformance as well as excellent gain.

RadioWaves field-proven pre-assembled antennas and robust pole mounts ensure "set and forget" installation with minimal post-installation maintenance. The included radome ensures robust and reliable performance under ...

[Read More](#)

RDH4510B has been selected by Cambium for pairing with its PTP 450i, 550, and 670 series 5 GHz point-to-point radios due to its known and reliable performance. To ensure PTP radios can be accurately diagnosed and supported, deviation from manufacturer specified antennas is not recommended.



Cambium Networks

Cambium Networks enables service providers; enterprises; governmental and military agencies; oil, gas and utility companies; Internet service providers; and public safety organizations to build powerful communications networks, reach users from 200 kilometers across mountain tops down to their devices, and intelligently manage their business Wi-Fi infrastructure through end-to-end network ...

RF Specification

Start Frequency:	5250 MHz	Polarisation:	Dual Pol (V, H)
Stop Frequency:	5850 MHz	Input Impedance:	50

RF Connectors

Ports	RF Interface	Body Shape
2	N Female	Straight

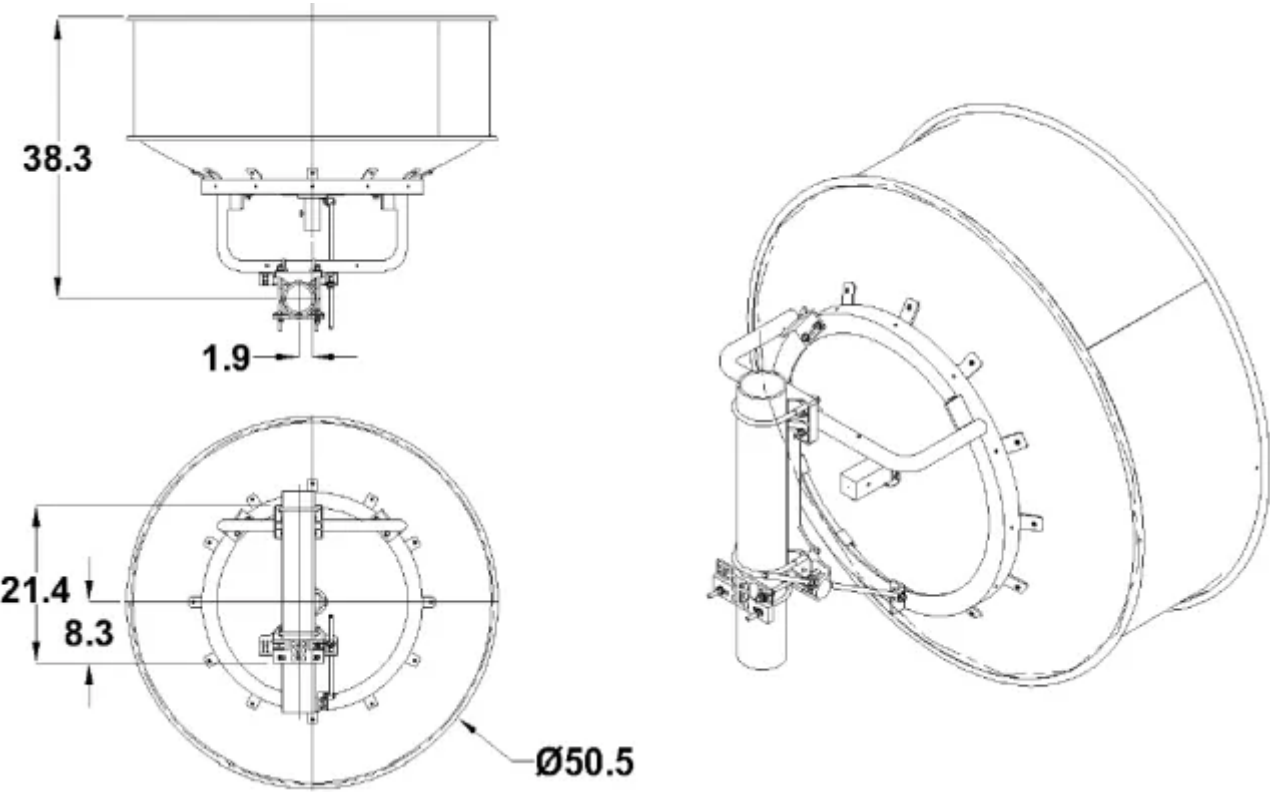
Frequency Test Data

Start Freq.	Stop Freq.	Peak Gain	Return Loss	VSWR	Azimuth	Elevation	F/B Ratio	XPD
5250 MHz	5450 MHz	34.2 dBi	> 14 dB	< 1.5:1	3°	3°	> 49 dB	> 30 dB
5450 MHz	5850 MHz	34.7 dBi	> 14 dB	< 1.5:1	3°	3°	> 49 dB	> 30 dB

Physical Specification

Subtype:	Dish / Grid	Dimensions:	1800 x 1520 x 890
Input Ports:	2	Materials:	Aluminium
MIMO:	2x2 MIMO	Mounting:	Pole Clamp 114 mm
Min. Operating Temperature:	-40 °C	Weight:	38.3 kg
Max. Operating Temperature:	60 °C	Compliance/Certifications:	ISO 9001 Quality Management
		RoHS	

Drawing



Disclaimer: Although care has been taken to ensure the accuracy, completeness and reliability of the information provided, Powertec assumes no responsibility therefore. The user of the information agrees that the information is subject to change without notice. Powertec assumes no responsibility for the consequences of use of such information, nor for any infringement of third party intellectual property rights which may result from its use. IN NO EVENT SHALL POWERTEC BE LIABLE FOR ANY DIRECT, INDIRECT, SPECIAL, OR INCIDENTAL DAMAGE RESULTING FROM, ARISING OUT OF OR IN CONNECTION WITH THE USE OF THE INFORMATION.

