

Cambium Dual Polarised 5 GHz SP Parabolic Antenna, 0.9 metre

MPN: RDH4504B

Description

Cambium's RDH4504B is a high gain dual-polarised parabolic dish antenna manufactured by RadioWaves. The 0.9 metre (3 ft) diameter antenna provides a nominal peak gain of 32 dBi from 5250 to 5850 MHz, and capable of operation across the full 5 GHz band from 4900 to 6000 MHz with only a minor degradation in performance.

0.9 metre diameter antennas provide a tight beamwidth for use in long distance 5 GHz wireless links and can be used to provide high throughput data connections beyond 30 kilometres.

The SP Standard Performance Series by RadioWaves offers a full line of cost effective standard performance parabolic antennas engineered to deliver reliable radio links.

Designed for both unlicensed and licensed band applications, RadioWaves field-proven pre-assembled SP antennas and robust pole-mounts ensure "set and forget" installation with minimal post-installation maintenance.

[Read More](#)

RDH4509B has been selected by Cambium for pairing with its PTP 450i, 550, and 670 series 5 GHz point-to-point radios due to its known and reliable performance. To ensure PTP radios can be accurately diagnosed and supported, deviation from manufacturer specified antennas is not recommended.

RadioWaves provide a seven year manufacturer warranty.



Cambium Networks

Cambium Networks enables service providers; enterprises; governmental and military agencies; oil, gas and utility companies; Internet service providers; and public safety organizations to build powerful communications networks, reach users from 200 kilometers across mountain tops down to their devices, and intelligently manage their business Wi-Fi infrastructure through end-to-end network ...

RF Specification

Start Frequency:	5250 MHz	Polarisation:	Dual Pol (V, H)
Stop Frequency:	5850 MHz	Input Impedance:	50

RF Connectors

Ports	RF Interface	Body Shape
2	N Female	Straight

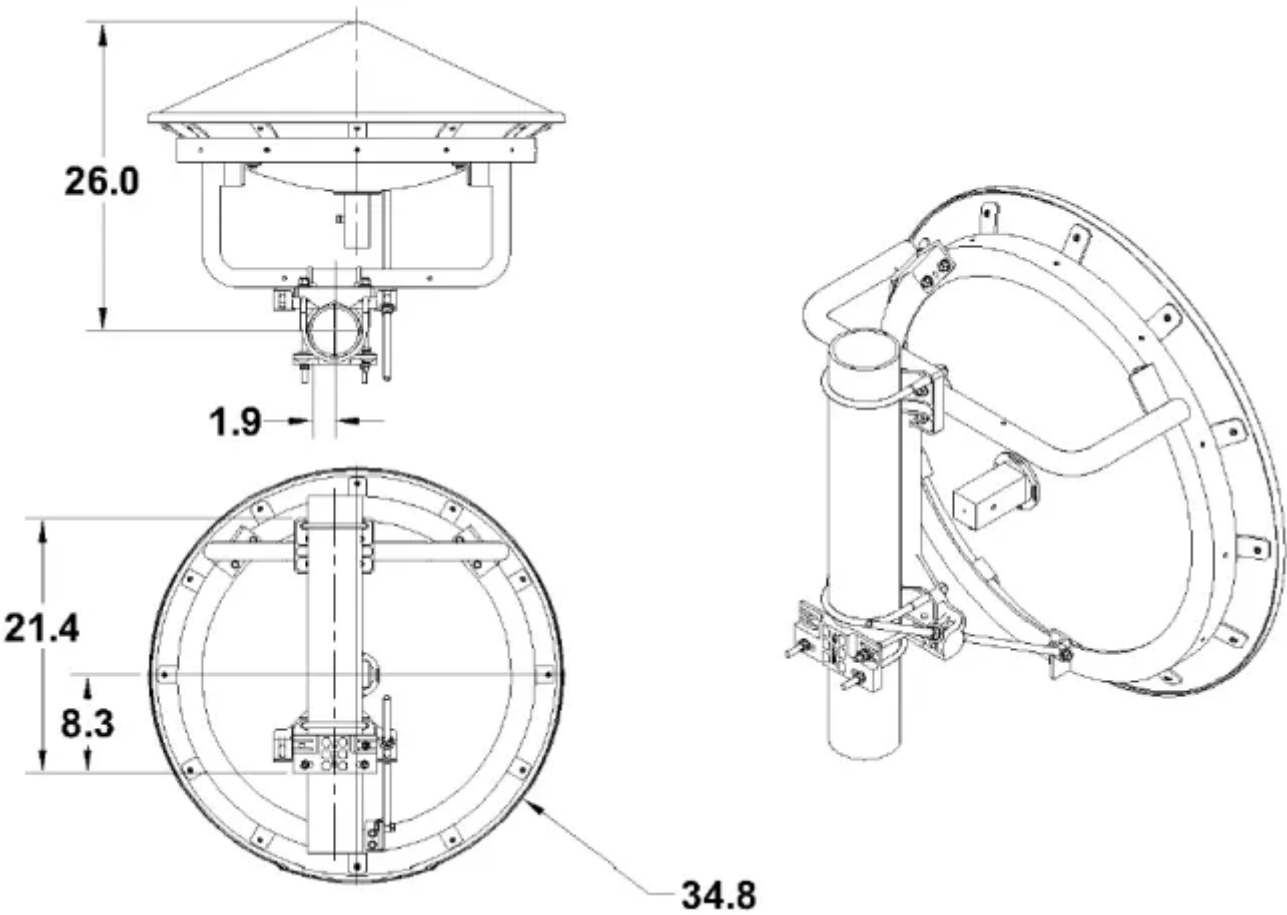
Frequency Test Data

Start Freq.	Stop Freq.	Peak Gain	Return Loss	VSWR	Azimuth	Elevation	F/B Ratio	XPD
5250 MHz	5450 MHz	32 dBi	> 14 dB	< 1.5:1	4.2°	4.2°	> 40 dB	> 30 dB
5450 MHz	5650 MHz	32.5 dBi	> 14 dB	< 1.5:1	4.2°	4.2°	> 40 dB	> 30 dB
5650 MHz	5850 MHz	33 dBi	> 14 dB	< 1.5:1	4.2°	4.2°	> 40 dB	> 30 dB

Physical Specification

Subtype:	Dish / Grid	Dimensions:	1400 x 1010 x 430
Input Ports:	2	Materials:	Aluminium
MIMO:	2x2 MIMO	Mounting:	Pole Clamp 114 mm
Min. Operating Temperature:	-40 °C	Weight:	15.8 kg
Max. Operating Temperature:	60 °C	Compliance/Certifications:	ISO 9001 Quality Management
RoHS			

Drawing



Disclaimer: Although care has been taken to ensure the accuracy, completeness and reliability of the information provided, Powertec assumes no responsibility therefore. The user of the information agrees that the information is subject to change without notice. Powertec assumes no responsibility for the consequences of use of such information, nor for any infringement of third party intellectual property rights which may result from its use. IN NO EVENT SHALL POWERTEC BE LIABLE FOR ANY DIRECT, INDIRECT, SPECIAL, OR INCIDENTAL DAMAGE RESULTING FROM, ARISING OUT OF OR IN CONNECTION WITH THE USE OF THE INFORMATION.

