

Page



Powertec Wireless Technology
ABN: 42 082 948 463
PO Box 1034, Ashmore City
Queensland, Australia, 4214
sales@powertec.com.au
1300 769 378

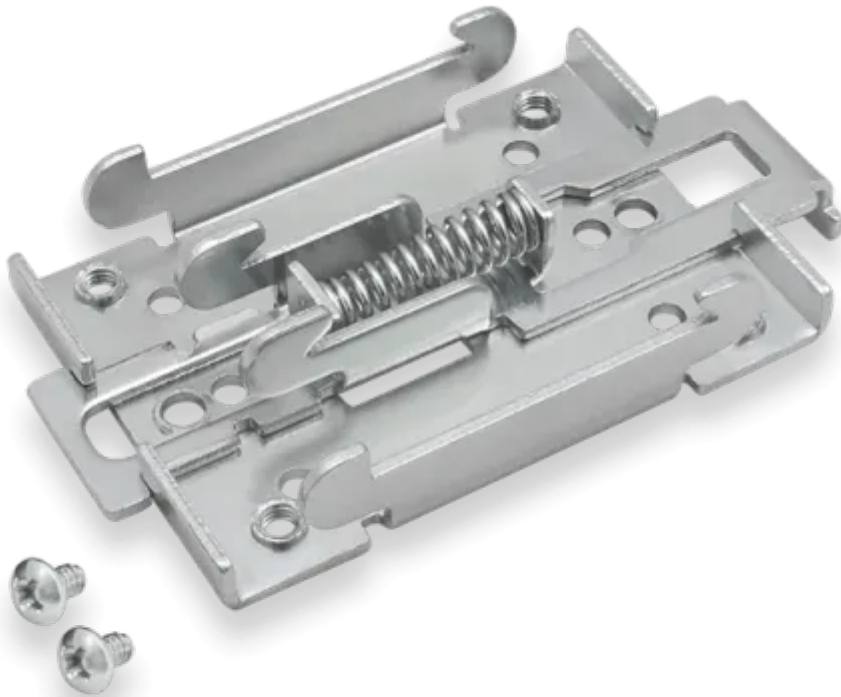
Teltonika Din Rail Kit

SKU
M2M-TE-00006
MPN
PR5MEC00

Description

Teltonika's DIN rail kit is a durable mounting solution designed to attach Teltonika's RUT and RUTX series modems to a standard 35 mm DIN rail. The mounting kit is manufactured from low carbon steel with electroplate galvanising.

- Mounts to standard 35 mm DIN Rail
- Made of low carbon steel
- Includes Philips Pan Head screw #6-32 x 3/16, 2 pcs



In 21 years we have launched to mass production over 100 different devices in IoT, Networking, Connected vehicles, Asset and personal Tracking areas. That makes over 8.600.000 million devices sold worldwide in over 150 different countries. Although these numbers are impressive, Teltonika is more than that – we are about innovating, inspiring, connecting, educating and reliable partnership.

By ...

Physical Specification

Subtype

Mounting Bracket

Dimensions

46 × 20 × 82 mm

Mounting

DIN Rail

Weight

57 g

Available Interfaces

Quantity	Mounting	Details
1	Teltonika Modem Screw Pattern	2x #6-32×3/16 to attach to Teltonika RUT style modems

Subcomponents

Quantity	Name	Materials	Material Finish
1	DIN Rail Mount	Steel	Electroplate Galvanised
2	Philips Pan Head screw #6-32×3/16	Steel	Electroplate Galvanised

Disclaimer: Although care has been taken to ensure the accuracy, completeness and reliability of the information provided, Powertec assumes no responsibility therefore. The user of the information agrees that the information is subject to change without notice. Powertec assumes no responsibility for the consequences of use of such information, nor for any infringement of third party intellectual property rights which may result from its use. IN NO EVENT SHALL POWERTEC BE LIABLE FOR ANY DIRECT, INDIRECT, SPECIAL, OR INCIDENTAL DAMAGE

RESULTING FROM, ARISING OUT OF OR IN CONNECTION WITH THE USE OF THE INFORMATION.

