

# AL340 Aluminium Modular Lattice Tower - 3.1m Section

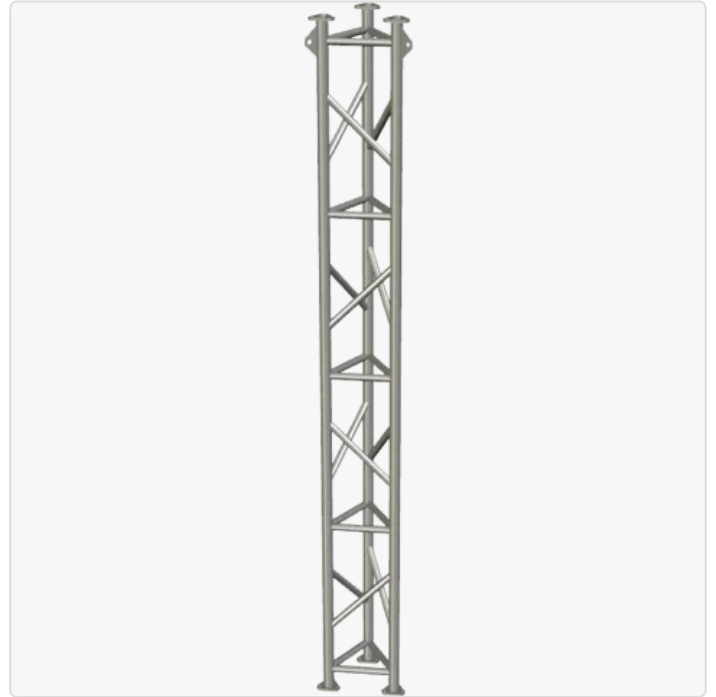
SKU: MAS-BH-00095  
MPN: AP-AL340-LM

## Description

This item is a 3.1 metre lattice module that is used to build AL340 series free-standing and guyed lattice towers. As a modular design, the tower section can be used and reused across a range of different platforms, with base kits available for attaching to skids, trailers, ground-mount footings, and more. The tower has a nominal 340 mm face width (300 mm upright centre-to-centre).

APAC's AL340 Series aluminium lattice modules feature three upright columns made from 50x4 CHS with 32x3 CHS lattice welded in between by certified boom welders, providing incredible strength while retaining a lightweight design. Each module is chemically cleaned and treated by hand, producing a brilliant finish.

These sections are 3100 mm in length allowing shipment anywhere in the globe. Spare modules have been listed for purchase separately for engineers seeking to build their own system, or as spares to extend the height of existing AL340 towers.



## APAC Infrastructure

APAC Infrastructure is an Australian metal fabrication company dedicated to high tech industries in the commercial, industrial, and defence sectors. Our team is committed to evolving our solutions to meet the rapidly changing needs of our rapidly changing world, ensuring your team deliver solutions at the very forefront of technological development. APAC develops made-to-measure height systems for ...

# Physical Specification

Subtype:	Mast / Tower	Dimensions:	450 × 450 × 3,100 mm
Weight:	22.8 kg	Nominal Height:	3.1 m
Installation:	AL340 Bolt Pattern		

## Subcomponents

Quantity	Name	Materials	Material Finish
1	Welded Assembly, 50x4 mm Tube Uprights, 32x3 mm Tube Braces	Aluminium 6005-T5	Bright/Pickled Finish

## Available Interfaces

Quantity	Mounting	Details
3	Pole 50 mm	For attaching ordinary equipment
1	AL340 Bolt Pattern	For attaching additional AL340 series modules/headframes
1	AL340 Triangular Uprights	For attaching AL340-specific brackets

Disclaimer: Although care has been taken to ensure the accuracy, completeness and reliability of the information provided, Powertec assumes no responsibility therefore. The user of the information agrees that the information is subject to change without notice. Powertec assumes no responsibility for the consequences of use of such information, nor for any infringement of third party intellectual property rights which may result from its use. IN NO EVENT SHALL POWERTEC BE LIABLE FOR ANY DIRECT, INDIRECT, SPECIAL, OR INCIDENTAL DAMAGE RESULTING FROM, ARISING OUT OF OR IN CONNECTION WITH THE USE OF THE INFORMATION.

