

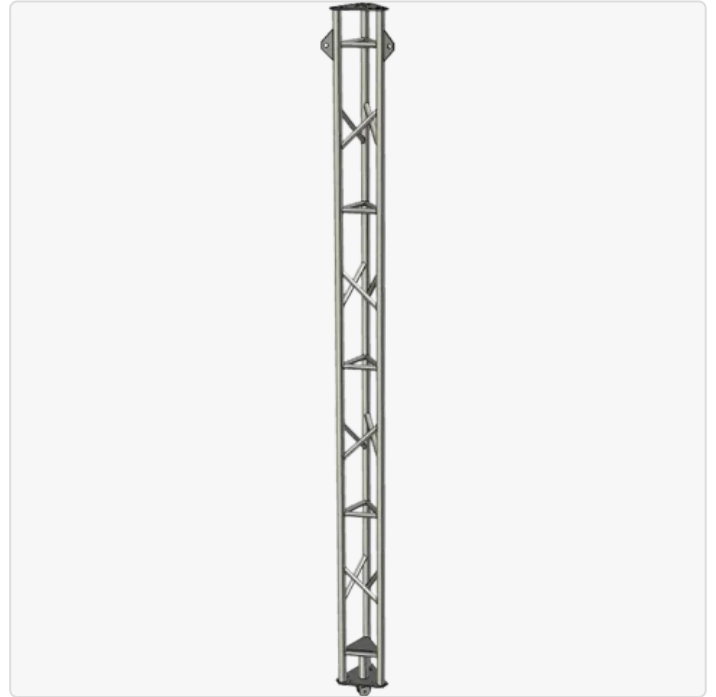
# AL220 Aluminium Modular Lattice Tower - Base Module

MPN: AP-AL220-BM

## Description

The AL220 Base Module is necessary to build any of the AL220 series towers. It forms the first 3.1 metre module from which additional 3.1 metre modules are stacked on top to create towers of the required height. The module has a finely machined billet clevis-eye welded into the base which allows it to slot into a matching clevis-fork on any of the AL220 series base plates.

APAC's AL220 aluminium lattice modules feature three upright legs made from 40x3 Round Tube with 25x3 Round Tube bracing welded in between by certified boom welders, providing incredible strength while retaining a lightweight design. Each module is chemically cleaned and treated by hand, producing a brilliant finish. AL220 series towers have a nominal 220 mm face width (180 mm centre-to-centre).



## APAC Infrastructure

APAC Infrastructure is an Australian metal fabrication company dedicated to high tech industries in the commercial, industrial, and defence sectors. Our team is committed to evolving our solutions to meet the rapidly changing needs of our rapidly changing world, ensuring your team deliver solutions at the very forefront of technological development. APAC develops made-to-measure height systems for ...

# Physical Specification

Subtype:	Mast / Tower	Dimensions:	300 × 300 × 3,190 mm
Weight:	12.5 kg	Nominal Height:	3.1 m
Installation:	AL220/Reducer Clevis-Eye		

## Subcomponents

Quantity	Name	Materials	Material Finish
1	Welded Assembly, 40x3 mm Tube Uprights, 25x3 mm Tube Braces	Aluminium 6005-T5	Bright/Pickled Finish

## Available Interfaces

Quantity	Mounting	Details
3	Pole 40 mm	For attaching ordinary equipment
1	AL220 Bolt Pattern	For attaching additional AL220 series modules/headframes
1	AL220 Triangular Uprights	For attaching AL220-specific brackets

Disclaimer: Although care has been taken to ensure the accuracy, completeness and reliability of the information provided, Powertec assumes no responsibility therefore. The user of the information agrees that the information is subject to change without notice. Powertec assumes no responsibility for the consequences of use of such information, nor for any infringement of third party intellectual property rights which may result from its use. IN NO EVENT SHALL POWERTEC BE LIABLE FOR ANY DIRECT, INDIRECT, SPECIAL, OR INCIDENTAL DAMAGE RESULTING FROM, ARISING OUT OF OR IN CONNECTION WITH THE USE OF THE INFORMATION.

