

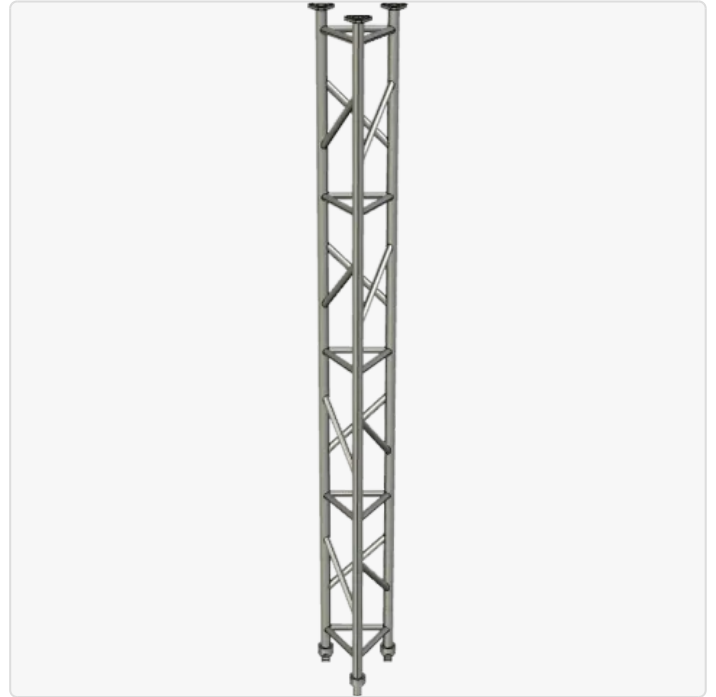
AL340 Aluminium Modular Lattice Tower - Base Module

MPN: AP-AL340-BM

Description

The AL340 Base Module is necessary to build any of the Hinging AL340 series towers. It forms the first 3.1 metre module from which additional 3.1 metre modules are stacked on top to create towers of the required height. The module has three finely machined 76.2 mm solid billet clevis-eyes welded onto the base of each leg, which allows it to slot into a matching clevis-fork base plate. The tower has a nominal 340 mm face width (300 mm upright centre-to-centre).

APAC's AL340 Series aluminium lattice modules feature three upright columns made from 50x4 CHS with 32x3 CHS lattice welded in between by certified boom welders, providing incredible strength while retaining a lightweight design. Each module is chemically cleaned and treated by hand, producing a brilliant finish.



APAC Infrastructure

APAC Infrastructure is an Australian metal fabrication company dedicated to high tech industries in the commercial, industrial, and defence sectors. Our team is committed to evolving our solutions to meet the rapidly changing needs of our rapidly changing world, ensuring your team deliver solutions at the very forefront of technological development. APAC develops made-to-measure height systems for ...

Physical Specification

Subtype:	Mast / Tower	Dimensions:	450 × 450 × 3,100 mm
Weight:	24 kg	Nominal Height:	3.1 m
Installation:	AL340 Clevis-Eye Pattern		

Subcomponents

Quantity	Name	Materials	Material Finish
1	Welded Assembly, 76.2 Billet Knuckle-Eyes, 50x4 mm Tube Uprights, 32x3 mm Tube Braces	Aluminium 6005-T5	Bright/Pickled Finish

Available Interfaces

Quantity	Mounting	Details
3	Pole 50 mm	For attaching ordinary equipment
1	AL340 Bolt Pattern	For attaching additional AL340 series modules/headframes
1	AL340 Triangular Uprights	For attaching AL340-specific brackets

Disclaimer: Although care has been taken to ensure the accuracy, completeness and reliability of the information provided, Powertec assumes no responsibility therefore. The user of the information agrees that the information is subject to change without notice. Powertec assumes no responsibility for the consequences of use of such information, nor for any infringement of third party intellectual property rights which may result from its use. IN NO EVENT SHALL POWERTEC BE LIABLE FOR ANY DIRECT, INDIRECT, SPECIAL, OR INCIDENTAL DAMAGE RESULTING FROM, ARISING OUT OF OR IN CONNECTION WITH THE USE OF THE INFORMATION.

