

AL220 Series Aluminium Tower Headframe, 4-Sector

SKU: MAS-BH-00027

MPN: AP-AL220-HF4

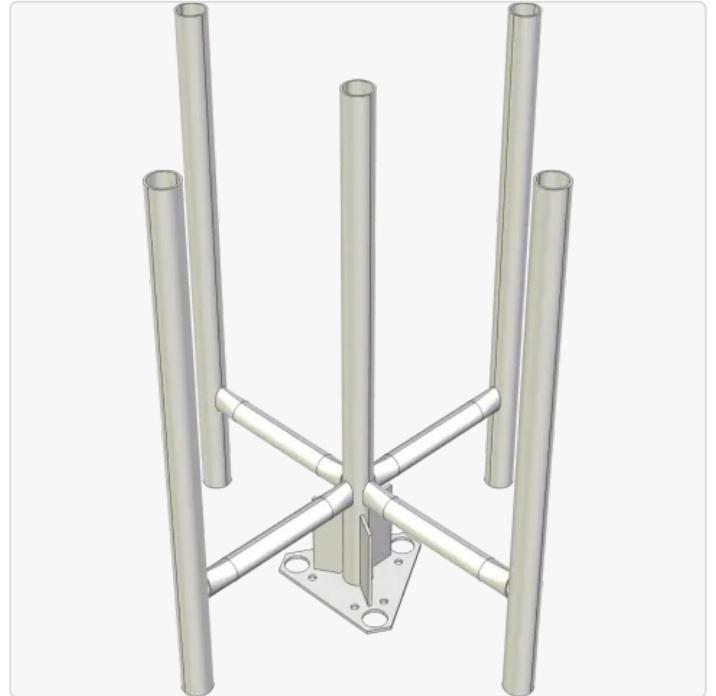
Description

APAC's AL220 headframes are designed to attach to the top of any AL220 series lattice tower. This four sector headframe mounts to a standard AL220 bolt pattern with the supplied bolt kit. A central tube provides a fifth mounting upright.

Each vertical mount is constructed from 50 mm diameter aluminium and fully welded to a 50 mm centre column via a 40 mm diameter brace to provide a high degree of rigidity and minimal deflection/torquing. Each mount is offset 350 mm from the centre tube.

Four-Sector headframes earned their name from traditional wireless network deployment which used an ABAB frequency configuration, such that radios using a shared frequency were placed 180° to each other for maximum isolation. These days, this type of headframe is more commonly used for mounting a broad set of equipment for projects requiring a mixed collection of wireless radios, cameras, RTK antennas, etc.

This headframe is part of the AL220 ecosystem, allowing it to be attached to any AL220 series module using the common bolt pattern.



APAC Infrastructure

APAC Infrastructure is an Australian metal fabrication company dedicated to high tech industries in the commercial, industrial, and defence sectors. Our team is committed to evolving our solutions to meet the rapidly changing needs of our rapidly changing world, ensuring your team deliver solutions at the very forefront of technological development. APAC develops made-to-measure height systems for ...

Physical Specification

Subtype:	Headframe	Mounting:	AL220 Bolt Pattern
Dimensions:	750 × 750 × 900 mm	Weight:	7.3 kg

Available Interfaces

Quantity	Mounting	Details
5	Pole 50 mm	For attaching ordinary equipment
5	Pole Spigot, 50 mm OD	For slotting additional equipment over the top of the spigot

Subcomponents

Quantity	Name	Materials	Material Finish
5	50x3 Round Tube Legs welded to 6 mm Flat Bar	Aluminium 6005-T5	Bright/Pickled Finish
4	40x3 Round Tube Braces	Aluminium 6005-T5	Bright/Pickled Finish

Disclaimer: Although care has been taken to ensure the accuracy, completeness and reliability of the information provided, Powertec assumes no responsibility therefore. The user of the information agrees that the information is subject to change without notice. Powertec assumes no responsibility for the consequences of use of such information, nor for any infringement of third party intellectual property rights which may result from its use. IN NO EVENT SHALL POWERTEC BE LIABLE FOR ANY DIRECT, INDIRECT, SPECIAL, OR INCIDENTAL DAMAGE RESULTING FROM, ARISING OUT OF OR IN CONNECTION WITH THE USE OF THE INFORMATION.

