

Page



Powertec Wireless Technology
ABN: 42 082 948 463
PO Box 1034, Ashmore City
Queensland, Australia, 4214
sales@powertec.com.au
1300 769 378

AL340 Hinged Base Plate Adapter for S600

SKU
MAS-BH-00105
MPN
AP-AL340-HBP-S600

Description

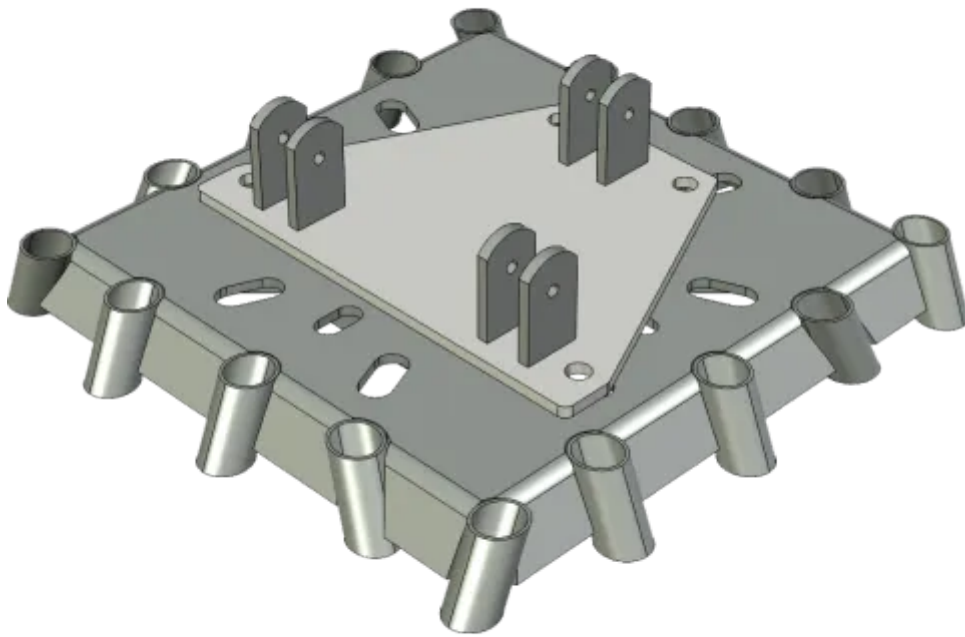
The AP-AL340-HBP-S600 is an interface bracket that allows an AL340 Base Module to attach to a Surefoot S600 pile cap. The Base Module and Hinging Base Plate are used together so that AL340 towers can be built on the ground and safely raised upright.

The Hinging Base Plate operates in only one axis, preventing the tower from leaning sideways during erection, ensuring the tower can be raised either by hand or with minimal lifting equipment. The bolt pattern permits placement at multiple angles.

It is required to construct AL340 aluminium lattice towers that are to be installed in the ground using the S600. It has three clevis-forks that accepts the three clevis-eyes present on AL340 base modules. A Class 8.8 M12 Bolt and Nyloc is used as a pin to secure each of the two clevis components. Thanks to the precision machining, the structural load is directed through the billet-formed clevis rather than the bolt. This design strategy ...

[Read More](#)

The Hinged Base Plate is most commonly used with AL340 freestanding towers up to 6 metres and guyed towers up to about 12 metres. For towers beyond this height the AL340 Reducer and Billet base should be used.



[APAC Infrastructure](#)

APAC Infrastructure is an Australian metal fabrication company dedicated to high tech industries in the commercial, industrial, and defence sectors. Our team is committed to evolving our solutions to meet the rapidly changing needs of our rapidly changing world, ensuring your team deliver solutions at the very forefront of technological development. APAC develops made-to-measure height systems for ...

Physical Specification

Subtype
Interface Bracket
Dimensions
490 × 365 × 115 mm
Mounting
S600 Bolt Pattern

Available Interfaces

Quantity	Mounting	Details
1	AL340 Clevis-Fork Pattern	For receiving AL340 Base Modules

Subcomponents

Quantity	Name	Materials	Material Finish
1	12 mm Flat Bar Base with 12 mm Flat Bar Forks	Stainless Steel 304, Flat Bar	Mill Finish

Disclaimer: Although care has been taken to ensure the accuracy, completeness and reliability of the information provided, Powertec assumes no responsibility therefore. The user of the information agrees that the information is subject to change without notice. Powertec assumes no responsibility for the consequences of use of such information, nor for any infringement of third party intellectual property rights which may result from its use. IN NO EVENT SHALL POWERTEC BE LIABLE FOR ANY DIRECT, INDIRECT, SPECIAL, OR INCIDENTAL DAMAGE RESULTING FROM, ARISING OUT OF OR IN CONNECTION WITH THE USE OF THE INFORMATION.

