

# Cambium Networks RDH4503C 2-FT (0.6M), Dual-Pol Dish Antenna, N Female, 4.9 to 6 GHz

SKU: WIF-CB-00117

MPN: RDH4503C

## Description

Cambium's RDH4503C is a dual-polarised Standard Performance (SP) parabolic dish antenna manufactured by RadioWaves. The 0.6 metre (2 ft) antenna provides a nominal peak gain of 29 dBi from 5250 to 5850 MHz, and capable of operation across the full 5 GHz band from 4900 to 6000 MHz with only a minor degradation in performance.

The SP Standard Performance Series by RadioWaves offers a full line of cost effective standard performance parabolic antennas engineered to deliver reliable radio links.

Designed for both unlicensed and licensed band applications, RadioWaves field-proven pre-assembled SP antennas and robust pole-mounts ensure "set and forget" installation with minimal post-installation maintenance.

[Read More](#)

RDH4503C has been selected by Cambium for pairing with its PTP 450i, 550, and 670 series 5 GHz point-to-point radios due to its known and reliable performance. To ensure PTP radios can be accurately diagnosed and supported, deviation from manufacturer specified antennas is not recommended.



**Cambium  
Networks™**

## Cambium Networks

Cambium Networks enables service providers; enterprises; governmental and military agencies; oil, gas and utility companies; Internet service providers; and public safety organizations to build powerful communications networks, reach users from 200 kilometers across mountain tops down to their devices, and intelligently manage their business Wi-Fi infrastructure through end-to-end network ...

# RF Specification

Start Frequency:	5250 MHz	Polarisation:	Dual Pol (V, H)
Stop Frequency:	5850 MHz	Input Impedance:	50

## RF Connectors

**RF Interface**

N Female  
N Female

**Body Shape**

Straight  
Straight

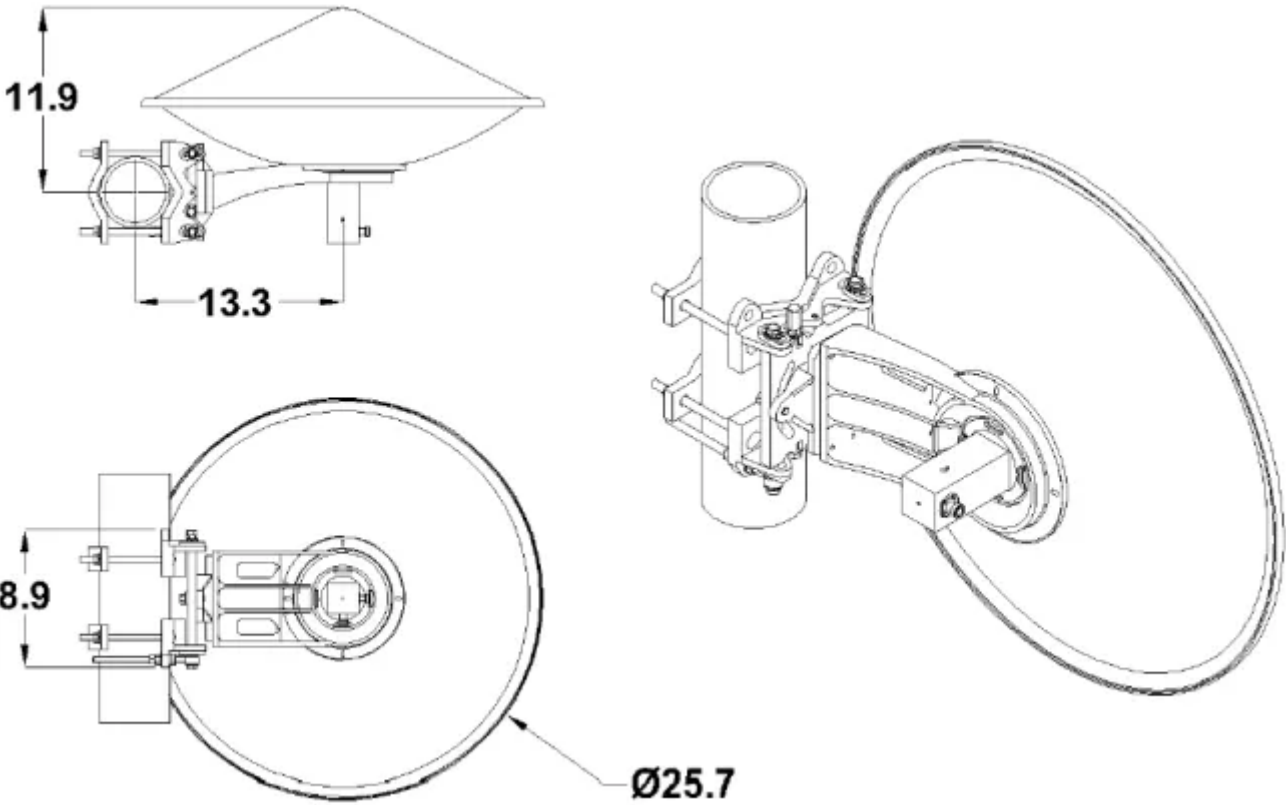
## Frequency Test Data

Start Freq.	Stop Freq.	Peak Gain	Return Loss	Azimuth	Elevation	F/B Ratio	XPB
5250 MHz	5450 MHz	28.5 dBi	> 14 dB	6.2°	6.2°	> 38 dB	> 30 dB
5450 MHz	5650 MHz	29 dBi	> 14 dB	6.2°	6.2°	> 38 dB	> 30 dB
5650 MHz	5850 MHz	29.5 dBi	> 14 dB	6.2°	6.2°	> 38 dB	> 30 dB

# Physical Specification

Subtype:	Dish / Grid	Dimensions:	200 x 710 x 710
Input Ports:	2	Materials:	Aluminium
MIMO:	2x2 MIMO	Mounting:	Pole Clamp 114 mm
Min. Operating Temperature:	-40 °C	Weight:	11.3 kg
Max. Operating Temperature:	60 °C		

## Drawing



Disclaimer: Although care has been taken to ensure the accuracy, completeness and reliability of the information provided, Powertec assumes no responsibility therefore. The user of the information agrees that the information is subject to change without notice. Powertec assumes no responsibility for the consequences of use of such information, nor for any infringement of third party intellectual property rights which may result from its use. IN NO EVENT SHALL POWERTEC BE LIABLE FOR ANY DIRECT, INDIRECT, SPECIAL, OR INCIDENTAL DAMAGE RESULTING FROM, ARISING OUT OF OR IN CONNECTION WITH THE USE OF THE INFORMATION.

