

Page



Powertec Wireless Technology  
ABN: 42 082 948 463  
PO Box 1034, Ashmore City  
Queensland, Australia, 4214  
sales@powertec.com.au  
1300 769 378

# **ComAnt Cross-Polarised Yagi Antenna, 380 to 410 MHz, 8dBi, N Female**

SKU  
ANT-CA-00002  
MPN  
CA400X+

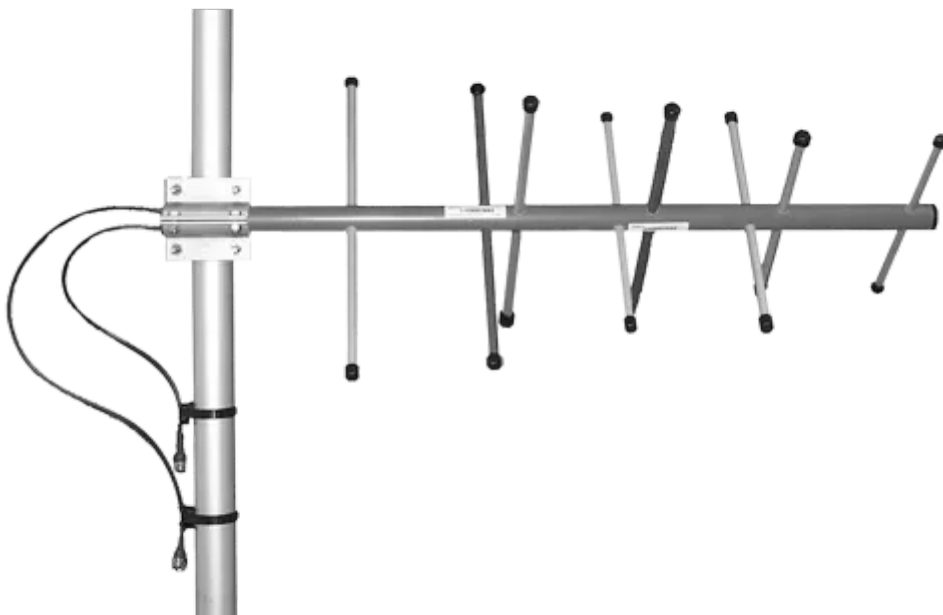
## Description

The ComAnt Cross-Polarised Yagi Antenna (SKU: ANT-CA-00002), developed by CompleTech, is a high-performance antenna operating in the 380 to 410 MHz range. With a peak gain of 8 dBi, it ensures superior signal reception and transmission for professional applications. This antenna features dual polarisation (vertical and horizontal) and is equipped with two N Female RF connectors, allowing for versatile connectivity.

Constructed from durable materials like ABS Plastic and Aluminium, the antenna boasts an IP67 rating, ensuring robust protection against dust and water ingress. It operates reliably in extreme temperatures ranging from -40 °C to 80 °C, making it suitable for harsh environments. Compliant with CE and RoHS standards, this antenna meets strict environmental and safety regulations.

Designed in Finland by CompleTech, the ComAnt antenna series is known for its adaptability across VHF, UHF, and SHF bands. Its modular design...

[Read More](#)



## CompleTech

CompleTech is a Finnish-owned company group specialising in the design, manufacturing and marketing of high quality ComAnt® communications antennas for professionals since 1990.

Radome enclosed IP67 proof ComAnt® antennas are in serial production covering all the main VHF-, UHF- and SHF-bands with different radiation patterns, polarizations and gains. The modularity principle makes it easy to turn ...

## RF Specification

Start Frequency

380 MHz

Stop Frequency

410 MHz

Polarisation

Dual Pol (V, H)

Input Impedance

50 Ω

RF Connectors

### Ports RF Interface

2 N Female

Frequency Test Data

**Start Freq. Stop Freq. Peak Gain VSWR Azimuth Elevation F/B Ratio**

380 MHz    410 MHz    8 dBi    < 1.5:1    69°    68°    > 12 dB

## Physical Specification

Subtype

[Yagi](#)

Input Ports

2

Min. Operating Temperature

-40 °C

Max. Operating Temperature

80 °C

Dimensions

870

Ingress Protection

[IP67](#)

Materials

[ABS Plastic](#), [Aluminium](#), [Beryllium Copper](#)

Mounting

[Pole Clamp 35 to 60 mm ø](#)

Weight

1 kg

Compliance/Certifications

CE

,

RoHS

Disclaimer: Although care has been taken to ensure the accuracy, completeness and reliability of the information provided, Powertec assumes no responsibility therefore. The user of the information agrees that the information is subject to change without notice. Powertec assumes no responsibility for the consequences of use of such information, nor for any infringement of third party intellectual property rights which may result from its use. IN NO EVENT SHALL POWERTEC BE LIABLE FOR ANY DIRECT, INDIRECT, SPECIAL, OR INCIDENTAL DAMAGE RESULTING FROM, ARISING OUT OF OR IN CONNECTION WITH THE USE OF THE INFORMATION.

