

ComAnt Cross-Polarised Yagi Antenna, 380 to 410 MHz, 10dBi, N Female

SKU: ANT-CA-00003

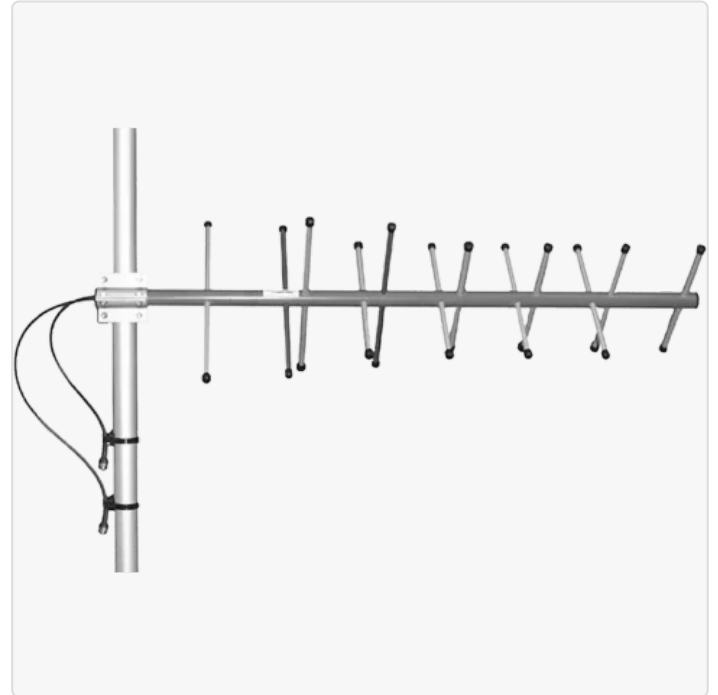
MPN: CA400X++

Description

The ComAnt Cross-Polarised Yagi Antenna (SKU: ANT-CA-00003) from CompleTech is designed for professional communication applications within the 380 to 410 MHz frequency range. Offering a peak gain of 10dBi, this antenna features dual slant $\pm 45^\circ$ polarisation and boasts a sturdy IP67-rated enclosure, ensuring reliable performance in harsh environments from -40°C to 80°C . Its dual N Female RF connections facilitate seamless integration into complex systems, supporting 2x2 MIMO configurations for enhanced signal quality.

Constructed from durable aluminium and ABS plastic, the antenna's radome enclosure is environmentally friendly, aligning with WEEE and RoHS standards. With a front-to-back ratio exceeding 12 dB and inter-port isolation greater than 30 dB, the antenna delivers robust performance with minimal interference. The ComAnt Yagi antenna is ideal for use in VHF, UHF, and SHF-band applications, adaptable through CompleTech's modular...

[Read More](#)



CompleTech

CompleTech is a Finnish-owned company group specialising in the design, manufacturing and marketing of high quality ComAnt® communications antennas for professionals since 1990.

Radome enclosed IP67 proof ComAnt® antennas are in serial production covering all the main VHF-, UHF- and SHF-bands with different radiation patterns, polarizations and gains. The modularity principle makes it easy to turn ...

RF Specification

Start Frequency:	380 MHz	Polarisation:	Dual Slant $\pm 45^{\circ}$
Stop Frequency:	410 MHz	Input Impedance:	50

RF Connectors

Ports	RF Interface
2	N Female

Frequency Test Data

Start Freq.	Stop Freq.	Peak Gain	VSWR	Azimuth	Elevation	F/B Ratio	Inter-Port Iso.
380 MHz	410 MHz	10 dBi	< 1.5:1	55°	54°	> 12 dB	> 30 dB

Physical Specification

Subtype:	Yagi	Dimensions:	1150
Input Ports:	2	Ingress Protection:	IP67
MIMO:	2x2 MIMO	Materials:	ABS Plastic, Aluminium
Min. Operating Temperature:	-40 °C	Mounting:	Pole Clamp 35 to 60 mm
Max. Operating Temperature:	80 °C	Weight:	1.44 kg
		Compliance/Certifications:	RoHS

Disclaimer: Although care has been taken to ensure the accuracy, completeness and reliability of the information provided, Powertec assumes no responsibility therefore. The user of the information agrees that the information is subject to change without notice. Powertec assumes no responsibility for the consequences of use of such information, nor for any infringement of third party intellectual property rights which may result from its use. IN NO EVENT SHALL POWERTEC BE LIABLE FOR ANY DIRECT, INDIRECT, SPECIAL, OR INCIDENTAL DAMAGE RESULTING FROM, ARISING OUT OF OR IN CONNECTION WITH THE USE OF THE INFORMATION.

